

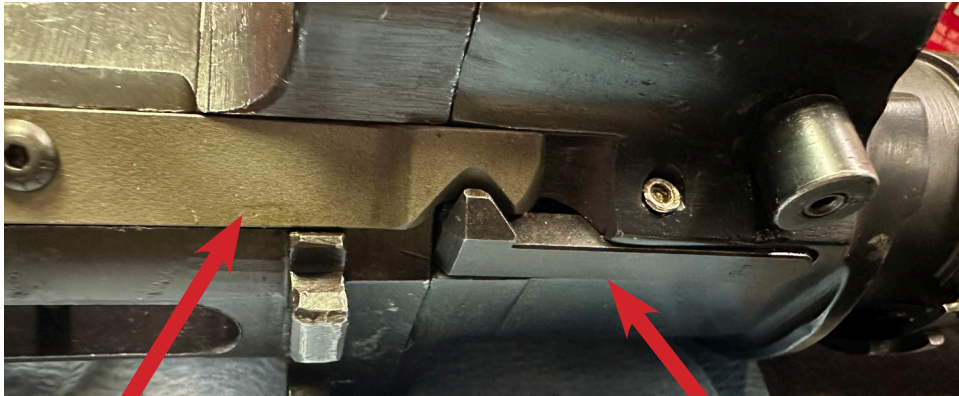
# Cocking Piece, Body, and Spring Tab Assembly

- Clean and apply thread locking compound to the cocking piece.
- Lightly secure the spring tab through the body and into the cocking piece with the 2 screws.
- Grip the assembly in a vise to maintain the alignment of the spring tab to the body and tighten. The edges should be parallel.



# Spring Tab Bend (pg. 1)

It's important for the spring tab to positively engage both the bolt catch lever and the retaining 'spike' on the barrel jacket.



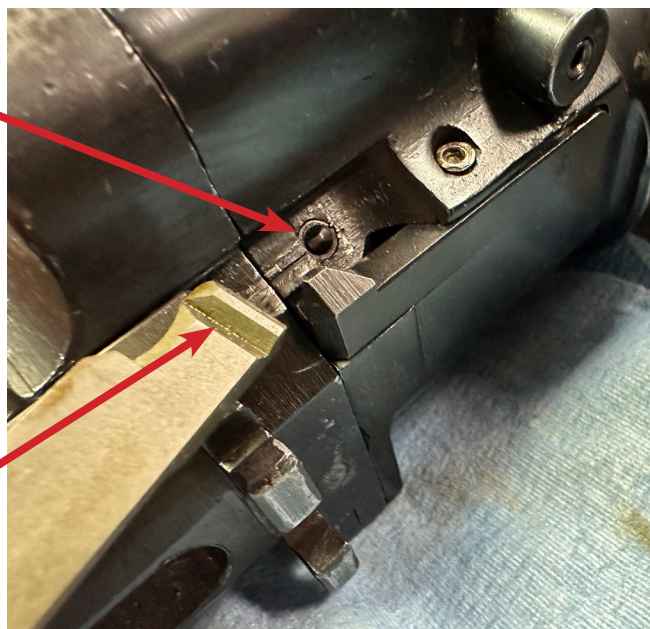
**Spring Tab**

**Bolt Catch Lever**

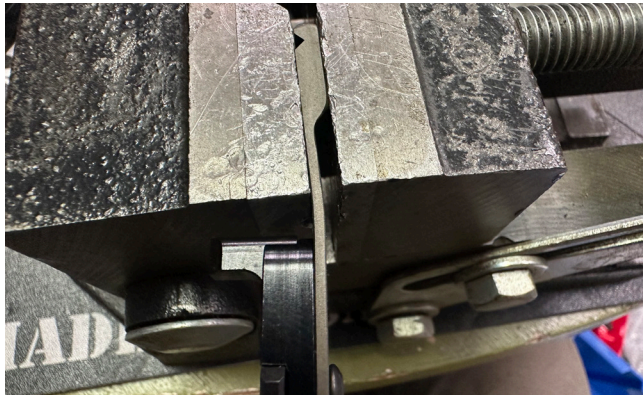
The inside "V" cut on the spring tab must positively engage the 'spike' on the barrel jacket so the charging handle does not slide backwards during cycle. The spring tab must be bent inward to properly engage both features.

**'Spike' on the Barrel Jacket**

**Inside "V" Cut on Spring Tab**

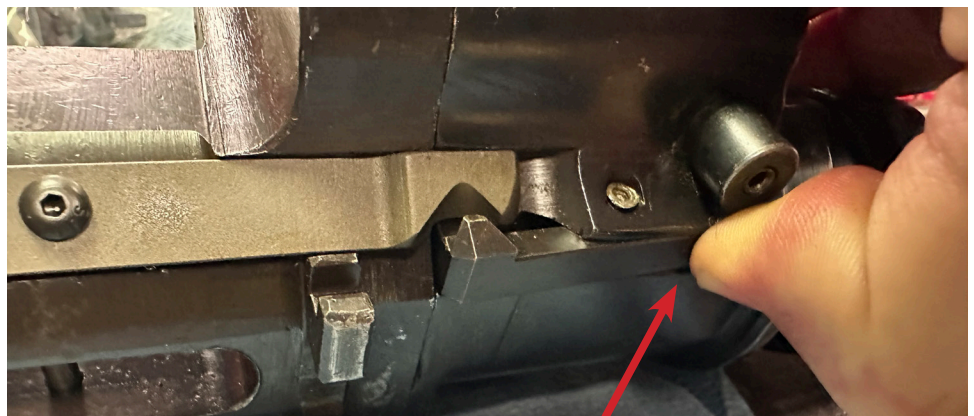


# cont., Spring Tab Bend (pg. 2)

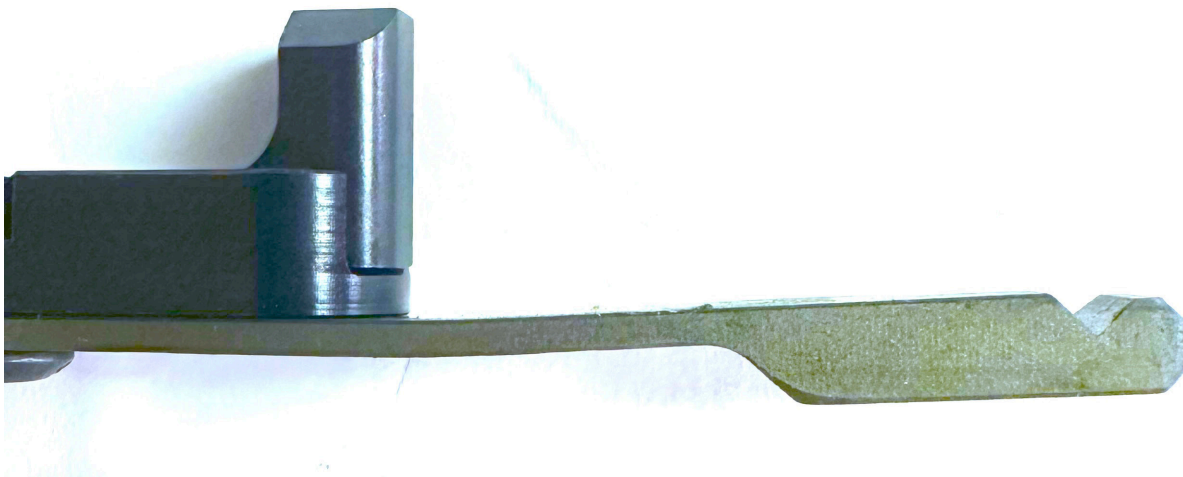


- Grip in a vise to bend the spring tab inward slightly.

- **Test:** With the bolt removed: Insert the charging handle in the MG34 and push forward. The spring tab should lock into both the 'spike' as well as the bolt catch lever.

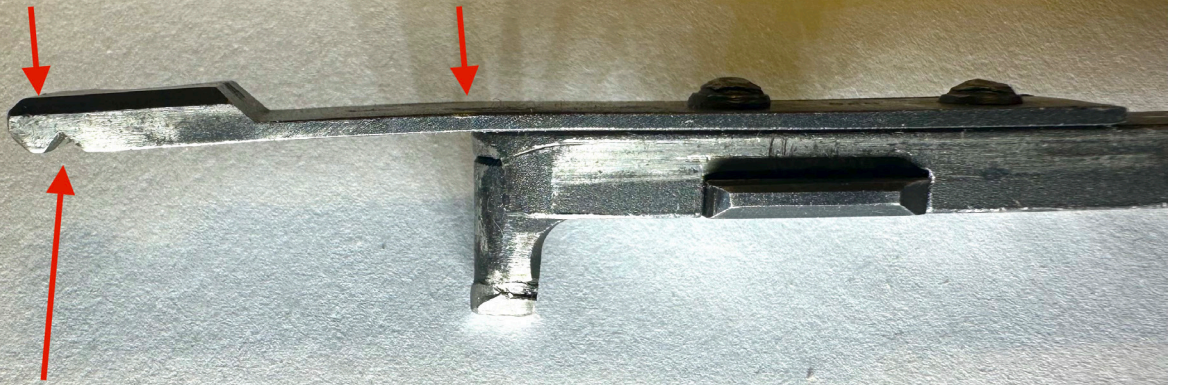


- The engagement to the catch lever is visible but to test for proper engagement on the "V" cut: depress the catch lever (pictured above) and try to retract the handle. If you do not have a positive engagement from the "V" cut on the 'spike,' increase the bend.
- A correct bend will look like the assembly pictured below.



## cont., Spring Tab Bend (pg. 3)

**Original Reference Photo:  
Note Inward Bend of Tab  
for Engagement of “V” Cut**



**“V” Cut  
in Tab**