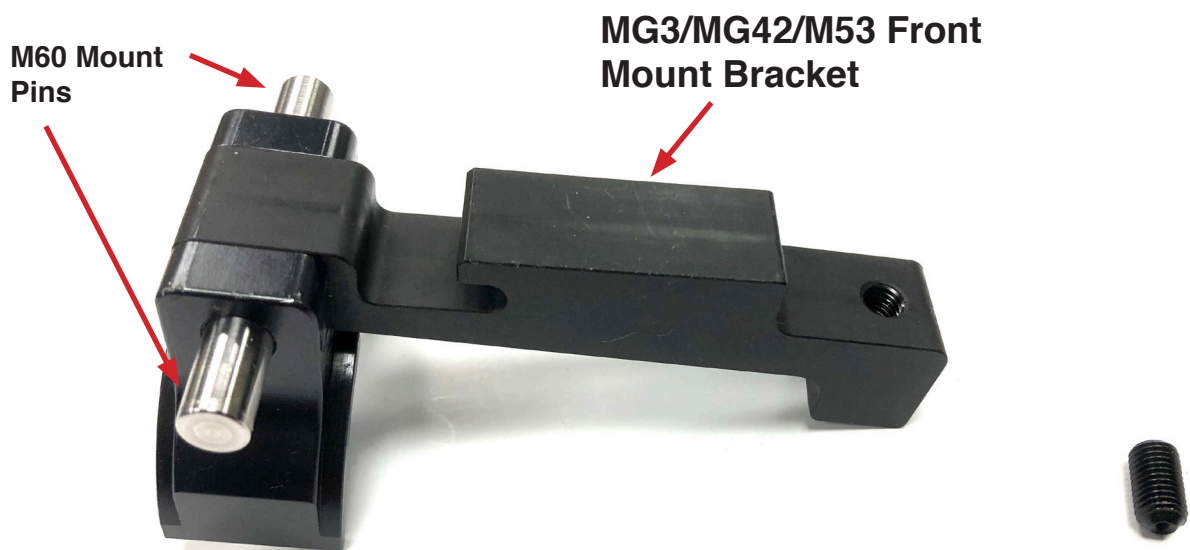
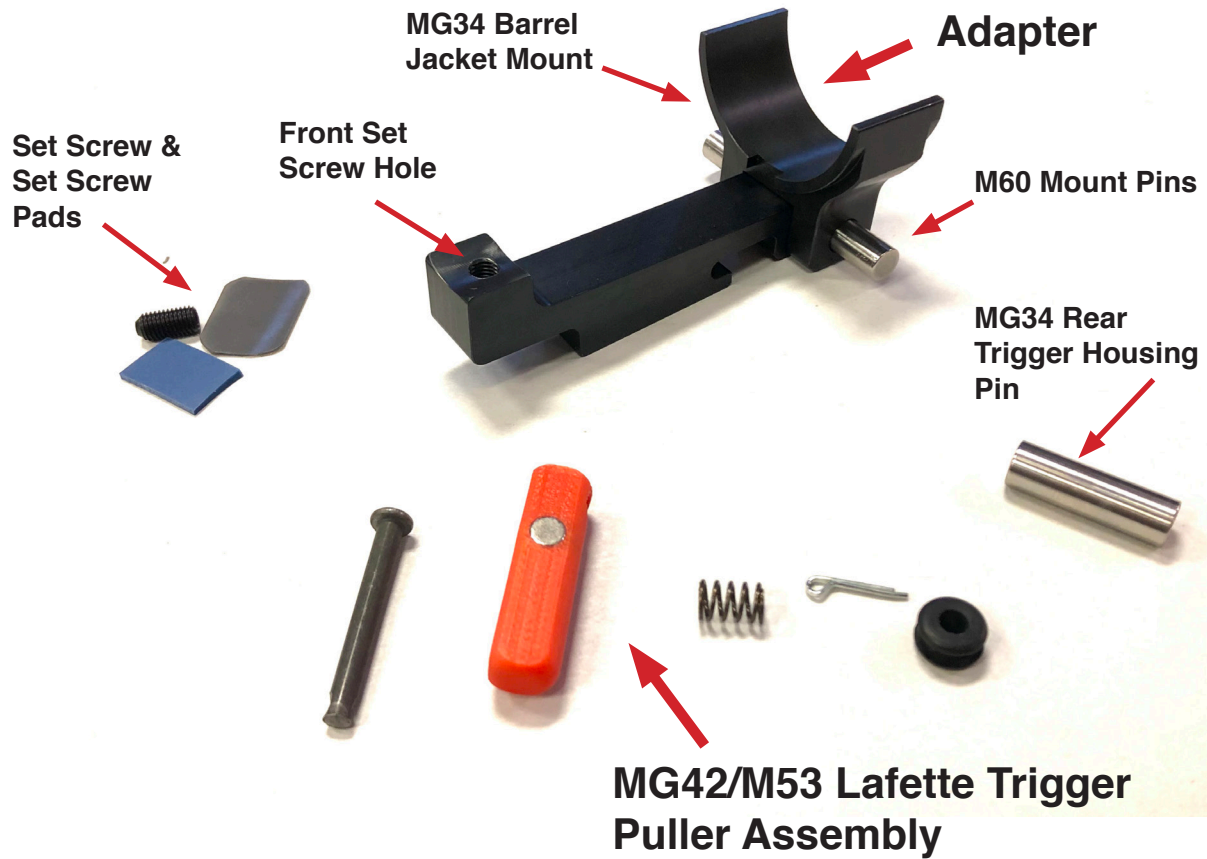


# MG34 Adapter Kit for MG42/M53 Lafette & M60 mounts



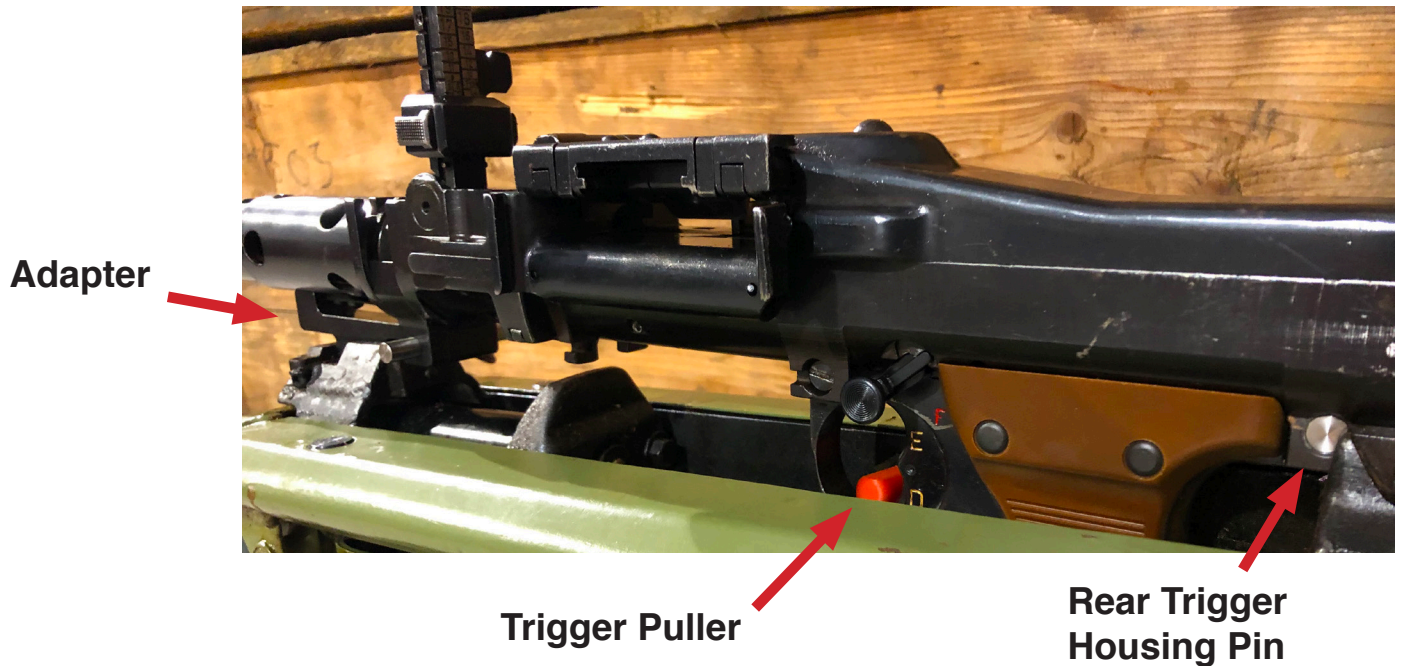
# BRP MG34 to MG42/M53 & M60 Mount Adapter Instructions

This adapter set allows a standard MG34 to fit and function on an MG42/M53 lafette (tripod) as well as an M60 "gooseneck" pintle. On the MG42/M53 tripod the MG34 sits at a slight up angle of 3.5° compared to the standard alignment. Shooters will need to be mindful of how this impacts the use of the measurements built into the tripod. The MG34 trigger puller adapter is designed to only pull the "D"/full auto portion of the trigger and allows proper function of remote fire lever on tripod. The original MG42/M53 trigger puller can be reinstalled for use with the MG42/M53.



Shown on  
M60 Mount

# MG42/M53 Lafette Installation:

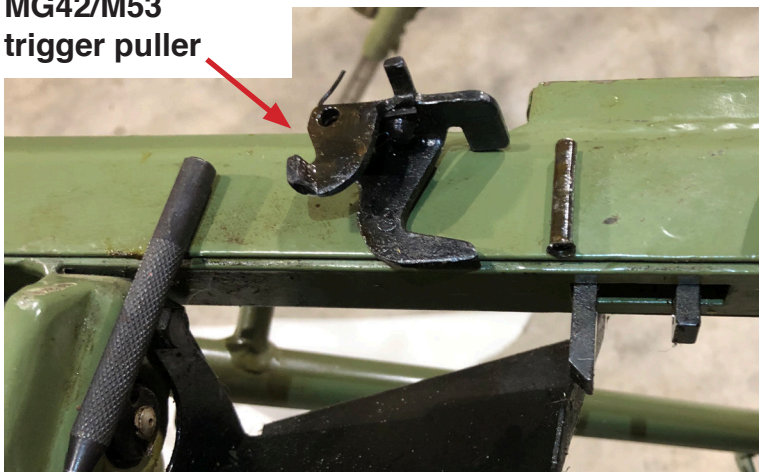


- 1) Attach the adapter to the rear MG34 barrel jacket mount and lock on the spring tab.
  - The set screw is not necessary for this setup since it will draw tight to the MG34 barrel jacket when installed on the mount. A thin Nylon pad is supplied to cushion the adapter front and set screw to the MG34 barrel jacket to prevent any marring on the jacket.

- 2) Remove the original MG42/M53 trigger puller from the mount.
  - Drive out the retaining pin using a long 1/8" punch.



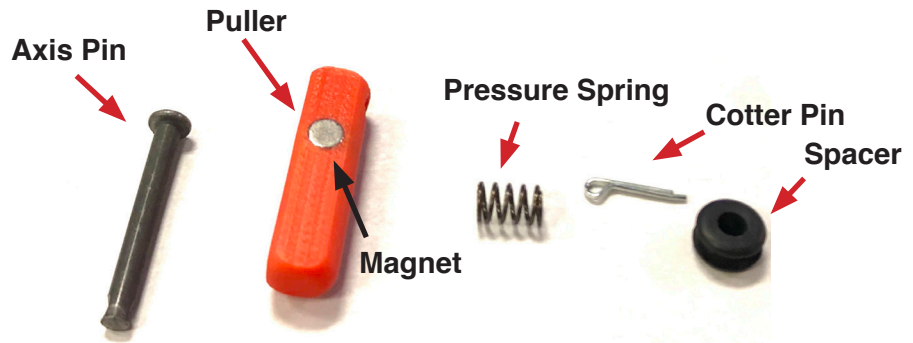
MG42/M53 trigger puller



- Remove the MG42/M53 trigger puller.

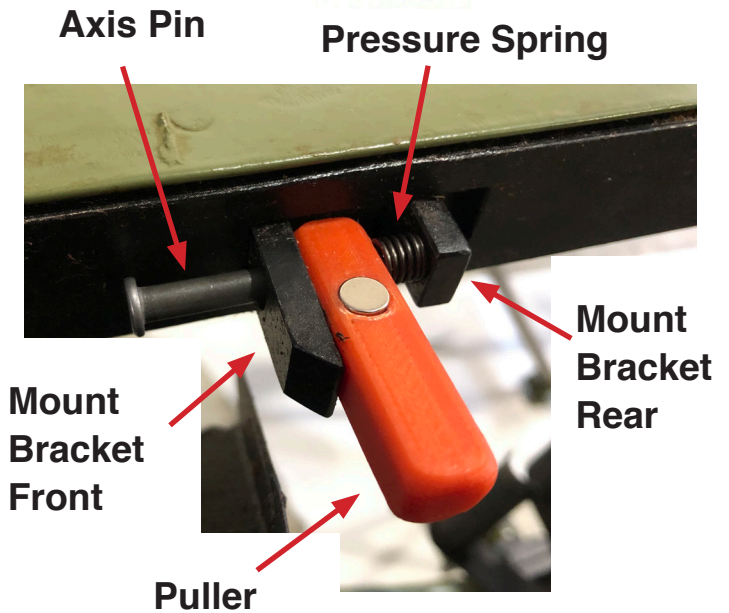
# MG34 Trigger Puller Assembly for MG42/M53 Lafette

3) Install the MG34 trigger puller assembly.

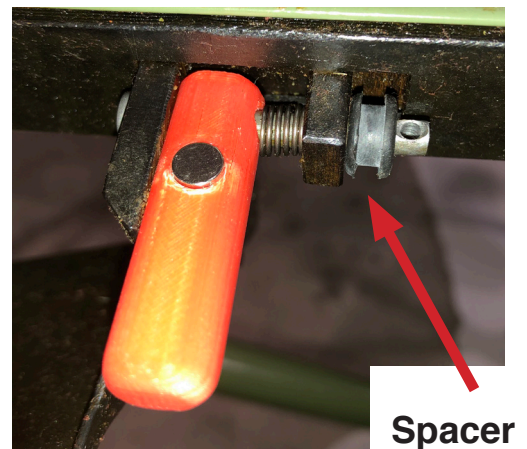


3a: Align the puller with the magnet facing 'up' and the flat portion firmly against the front of the puller mount bracket.

3b: Insert the axis pin through the front of the mount bracket and into the MG34 trigger puller, pressure spring, and rear of the puller mount bracket.

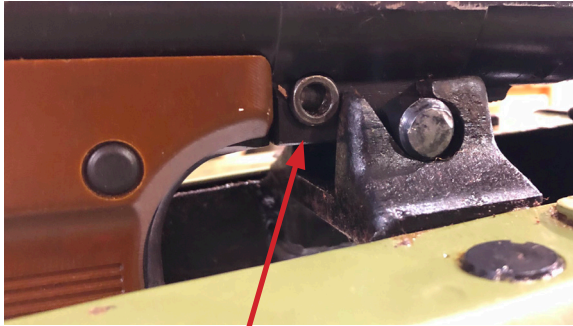


3c: Slide the rubber spacer over the rear of the axis pin at the back of the puller bracket.

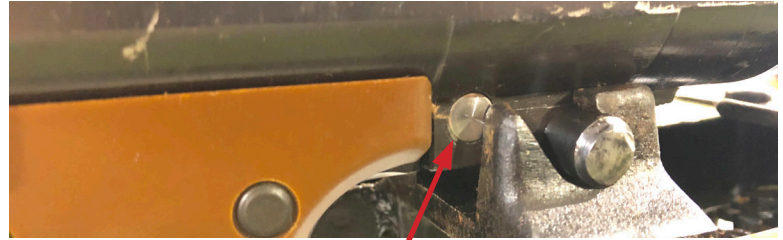


3d: Use the cotter pin to retain the axis pin

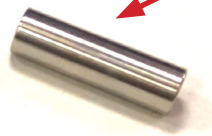
4) The size of the rear mount claws in most MG42 and M53 mounts do not have the relief cuts for the MG34 rear trigger housing mount pin. If your MG34 does not seat firmly in the rear mount claws, you must replace the rear trigger housing mount pin with the solid pin supplied in the kit. *Note: The solid pin will not retain in the gun unless it is seated in the mount.*



**Original Pin Hits Claw**



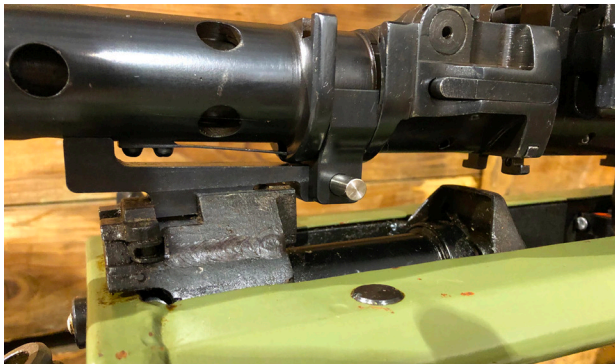
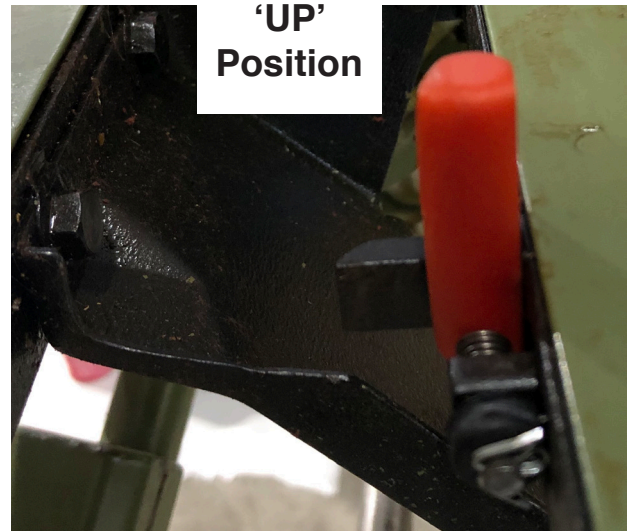
**MG34 Rear Trigger Housing Pin for MG42/M53 Lafette**



5) To Attach the MG34 to the mount:

5a: Flip the MG34 trigger puller 'up' so the magnet sticks to the side of the mount

5b: Drop the rear tripod pin into the rear mount claws with barrel jacket at an 'up' angle relative to the butt.



5c: With the rear tripod pin fully seated in the claw, pull back the front tripod latch and allow the front mount bracket on the adapter to drop and lock into the front tripod mount.

5d: Flip the trigger puller 'down' so it rests on the inside bottom of the trigger guard.

5e: Retract the charging handle to make sure it has full movement when mounted on the tripod.

