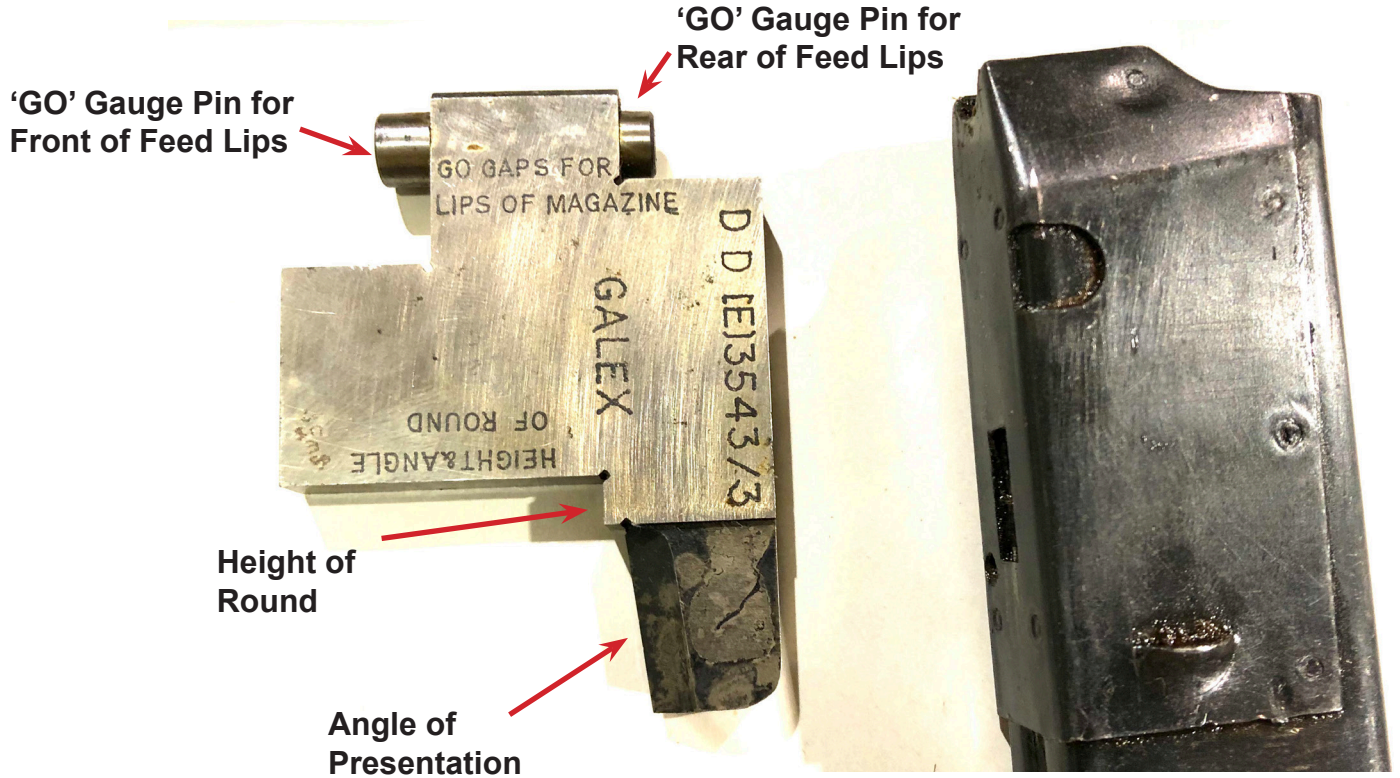


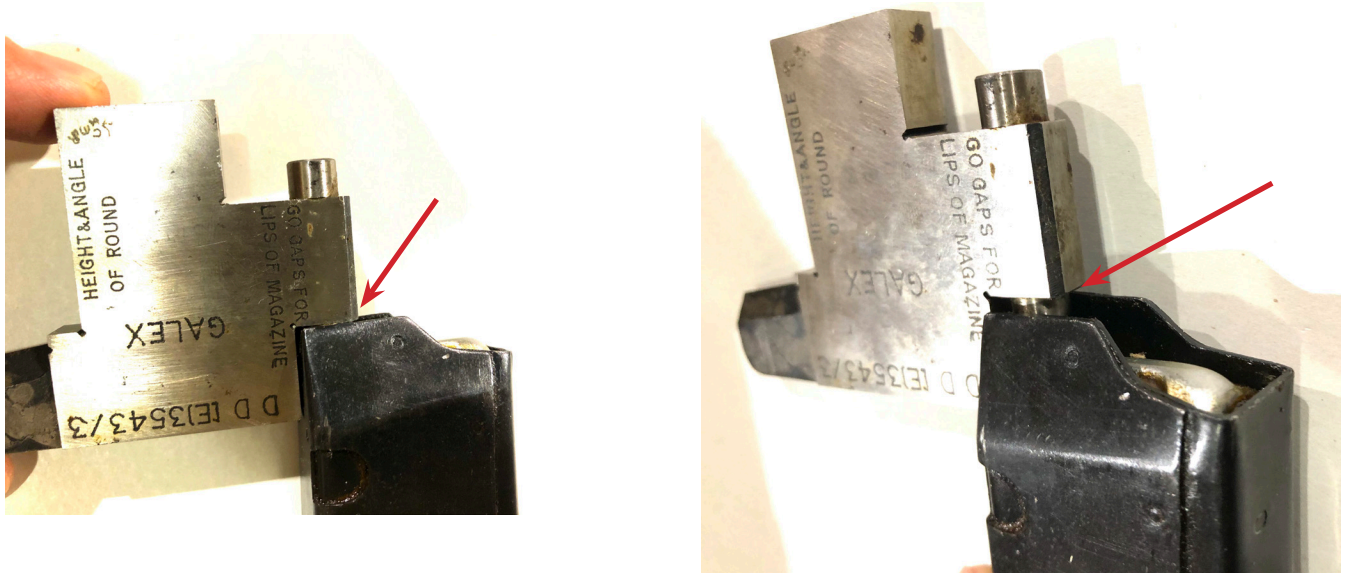
STEN Magazine Gauge Info

For the bolt to properly strip and chamber the cartridge, the magazine must present the cartridge at the correct height and angle. This gauge checks key magazine features to ensure proper feeding. If any of these features are not correct, the feed lips need to be reformed using the armourer's mandrel tools.



1) Check Rear of Feed Lips:

The 'GO' Gauge Pin with the short step should slide closely through the rear feed lip walls with the flat surface of the gauge firmly against the rear of the magazine.



2) Check Front of Feed Lips:

The 'GO' Gauge Pin with the long step should slide closely through the front feed lip walls with the flat surface of the gauge firmly against the rear of the magazine.



3) Check Height of Round

With the flat surface of the gauge firmly against the rear of the magazine, check the height of the cartridge with this corner/step in the gauge. If the cartridge is not touching this corner, the feed lips need to be opened to allow higher cartridge presentation. If this corner depresses the cartridge, the feed lips need to be closed to lower the cartridge presentation.



4) Check Angle of Presentation

With the flat surface of the gauge firmly against the rear of the magazine, check the cartridge Angle of Presentation with this 7° angled surface. Make sure to center the 'blade' portion of the gauge to the center of the cartridge.